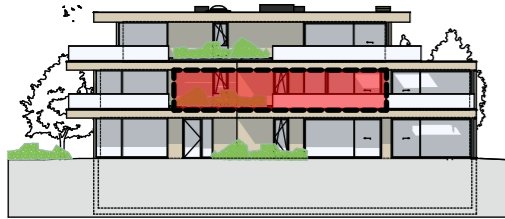


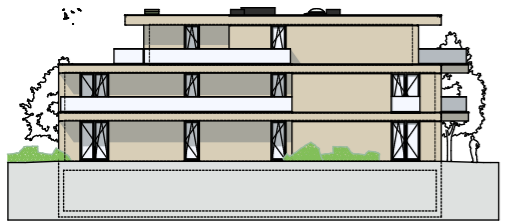
# RESIDENTIE OZAN

Appartement 01.02  
 Verdieping 1e verdieping  
 Schaal plan 1/50  
  
 Oppervlakte 78,80m<sup>2</sup>  
 Terras 16,10m<sup>2</sup>

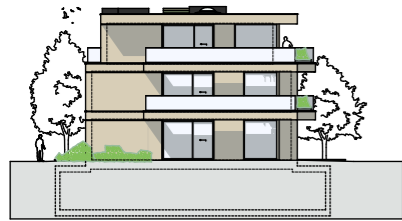
## VOORGEVEL



## ACHTERGEVEL



## LINKERGEVEL



## INPLANTING

