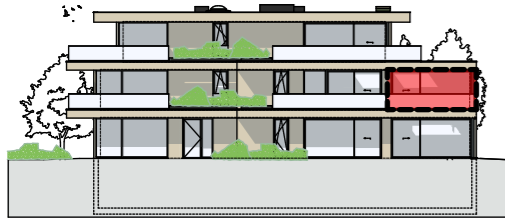


# RESIDENTIE OZAN

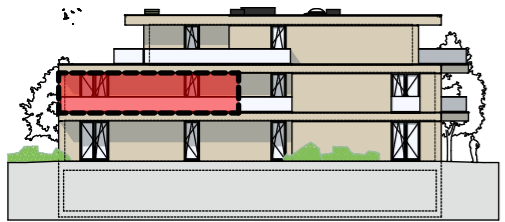
Appartement 01.03  
Verdieping 1e verdieping  
Schaal plan 1/60

Oppervlakte 96,25m<sup>2</sup>  
Terras (2) 26,20m<sup>2</sup>

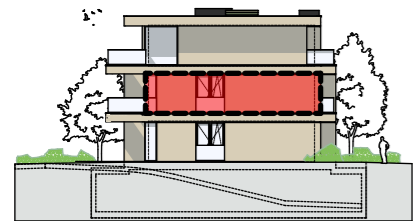
## VOORGEVEL



## ACHTERGEVEL



## RECHTERGEVEL



## INPLANTING

